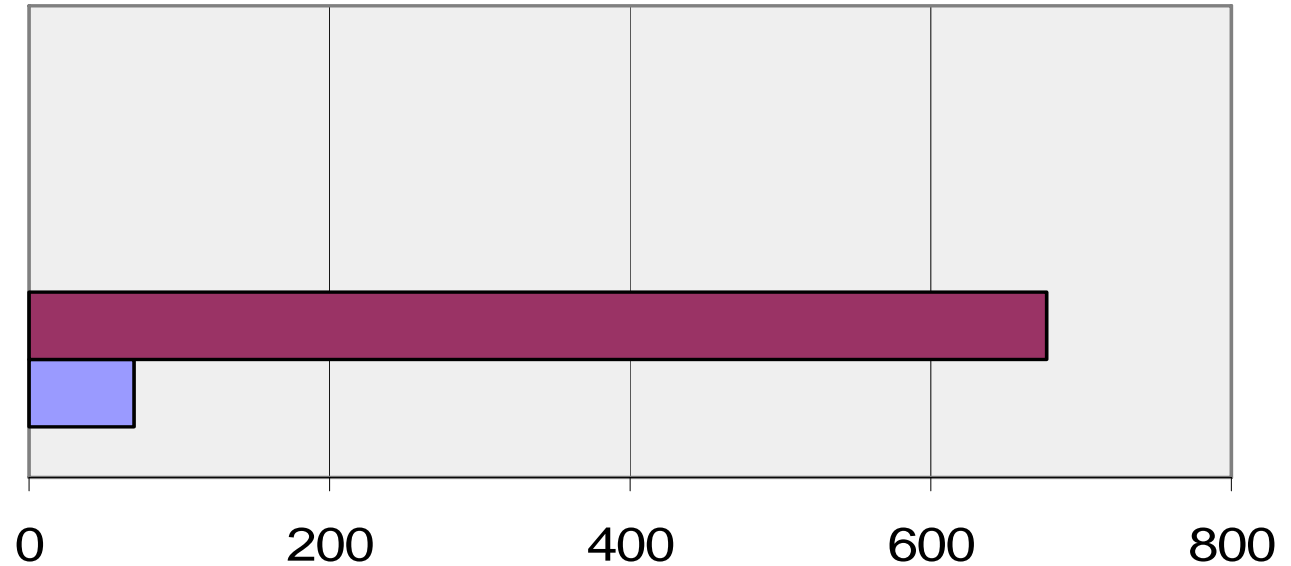


Nurses Survey Preliminary Data

697 Responses

National TB Nurses Coalition
National TB Controllers Association

91% Not Members of NTNC/NTCA

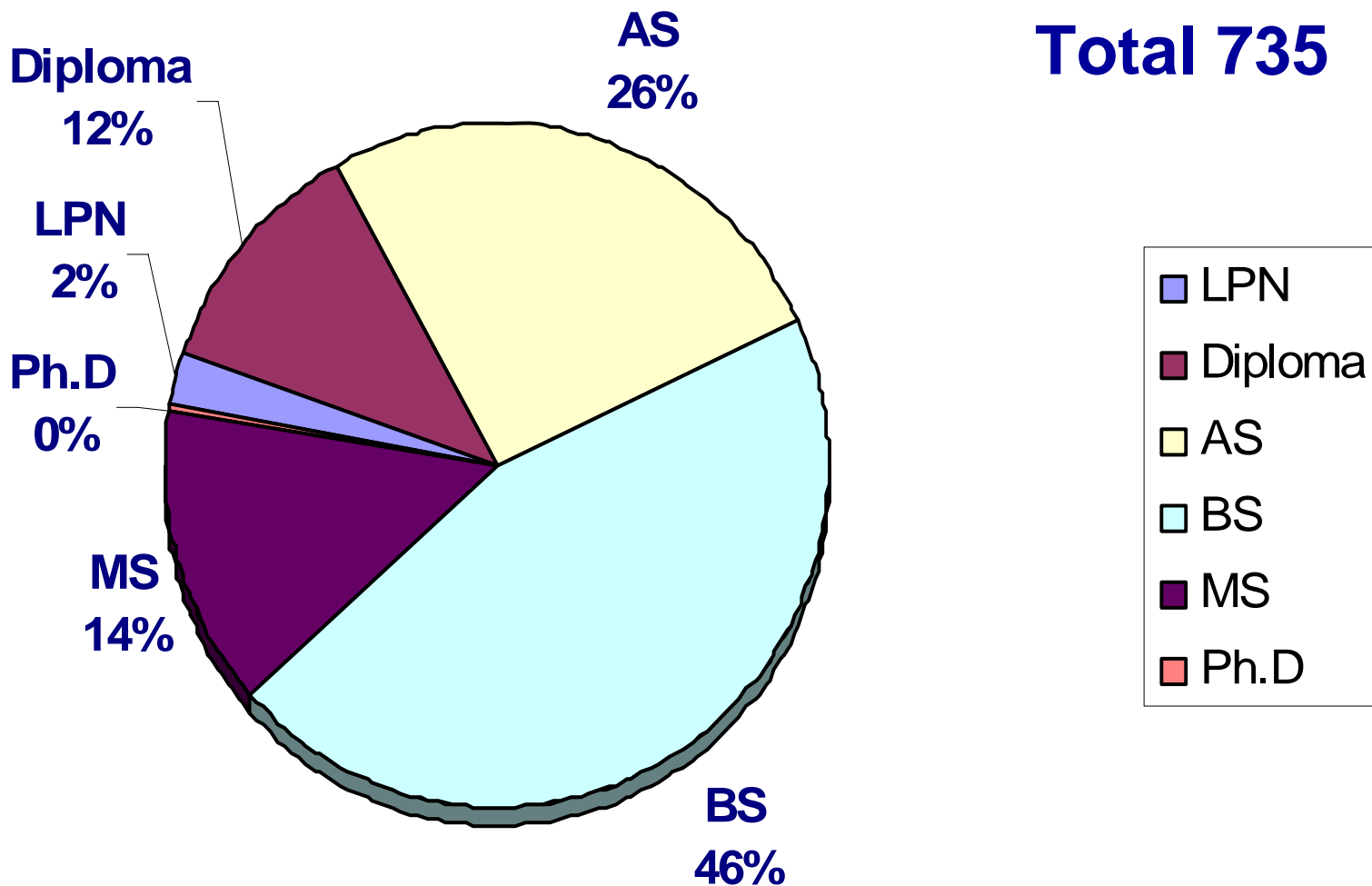


	1	2
■ Non Members	677	91%
■ Members	69	9%

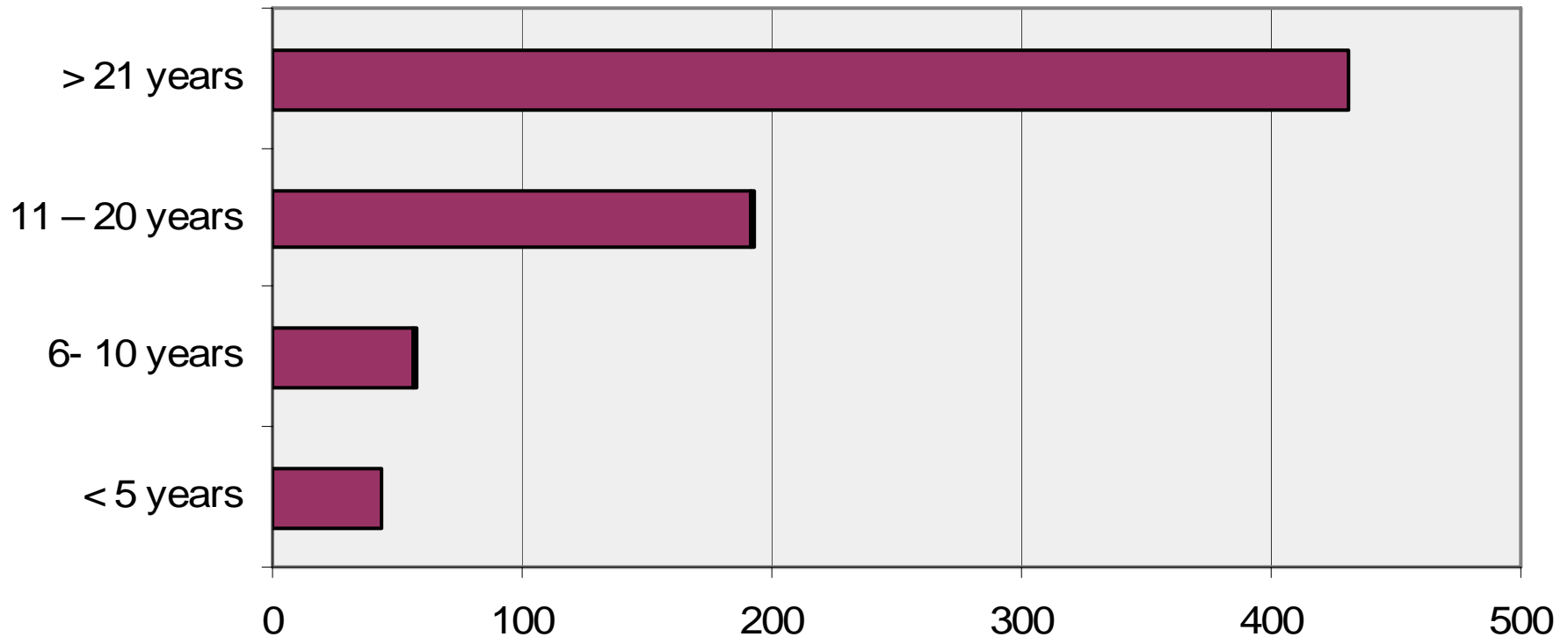
746 Responses

■ Members ■ Non Members

59% Baccalaureate Degree or Higher

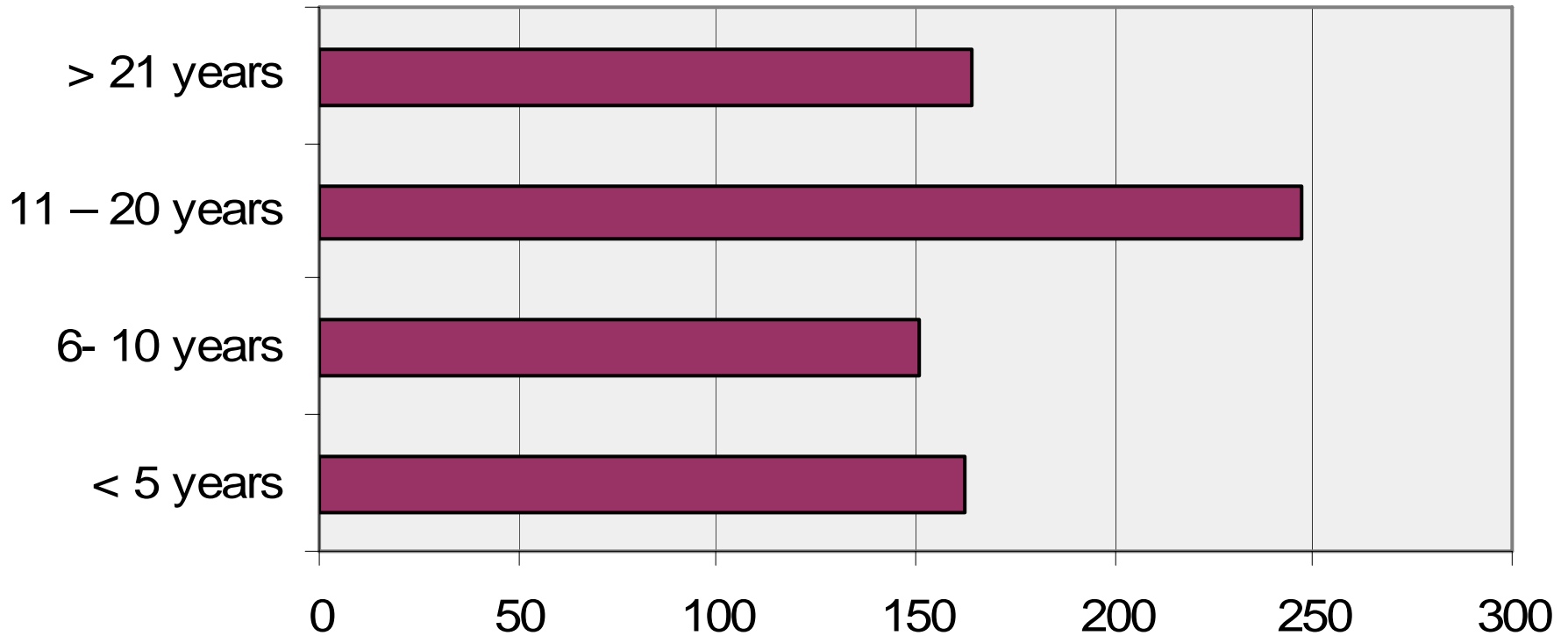


60% > 20 years Experience in Nursing



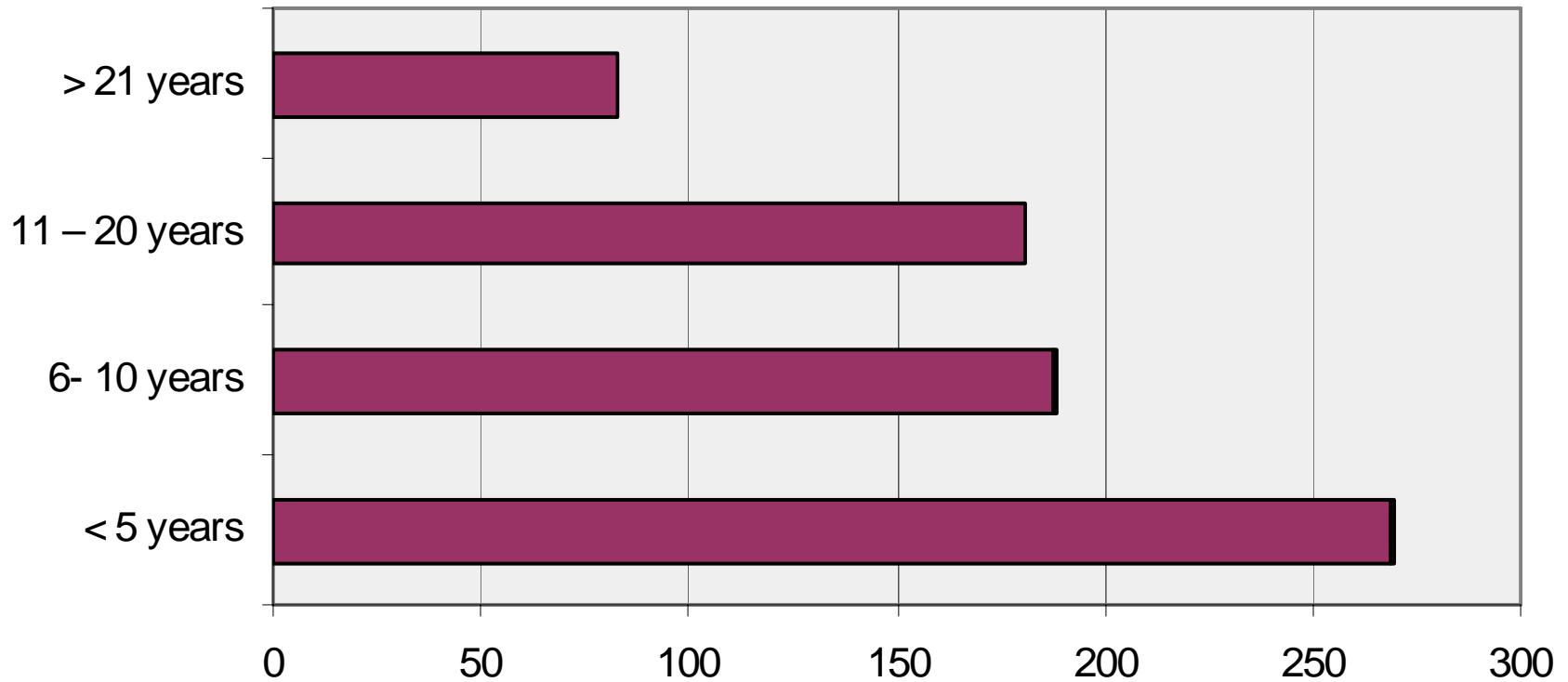
	< 5 years	6- 10 years	11 – 20 years	> 21 years
Percent	6%	8%	27%	60%
Total	44	57	192	431

Years of Experience in Public Health



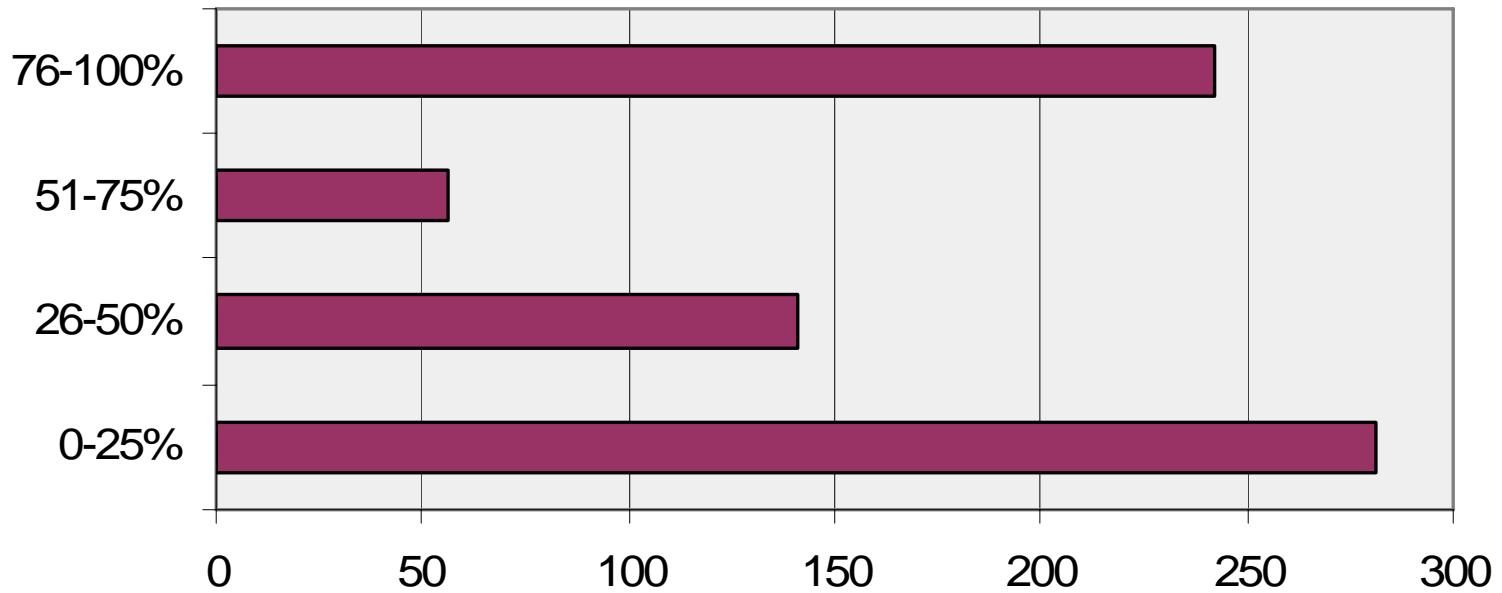
	< 5 years	6- 10 years	11 – 20 years	> 21 years
Percent	22%	21%	34%	23%
Total	162	151	247	164

Years of Experience in TB P & C



	< 5 years	6- 10 years	11 – 20 years	> 21 years
Percent	37%	26%	25%	12%
Total	269	188	181	83

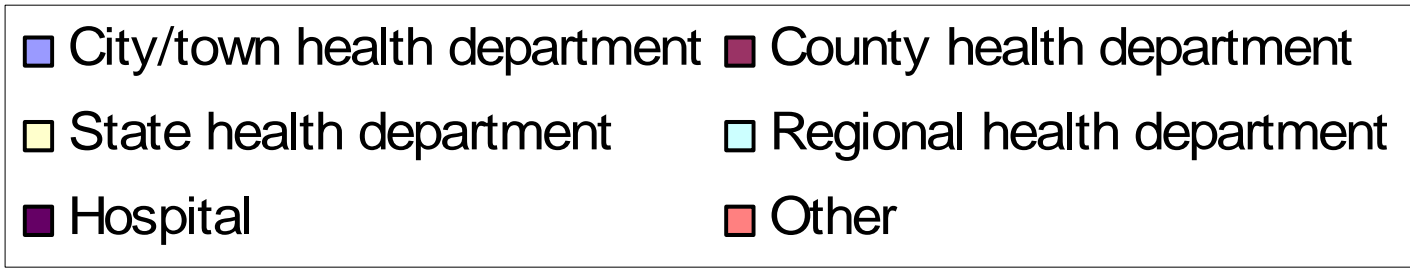
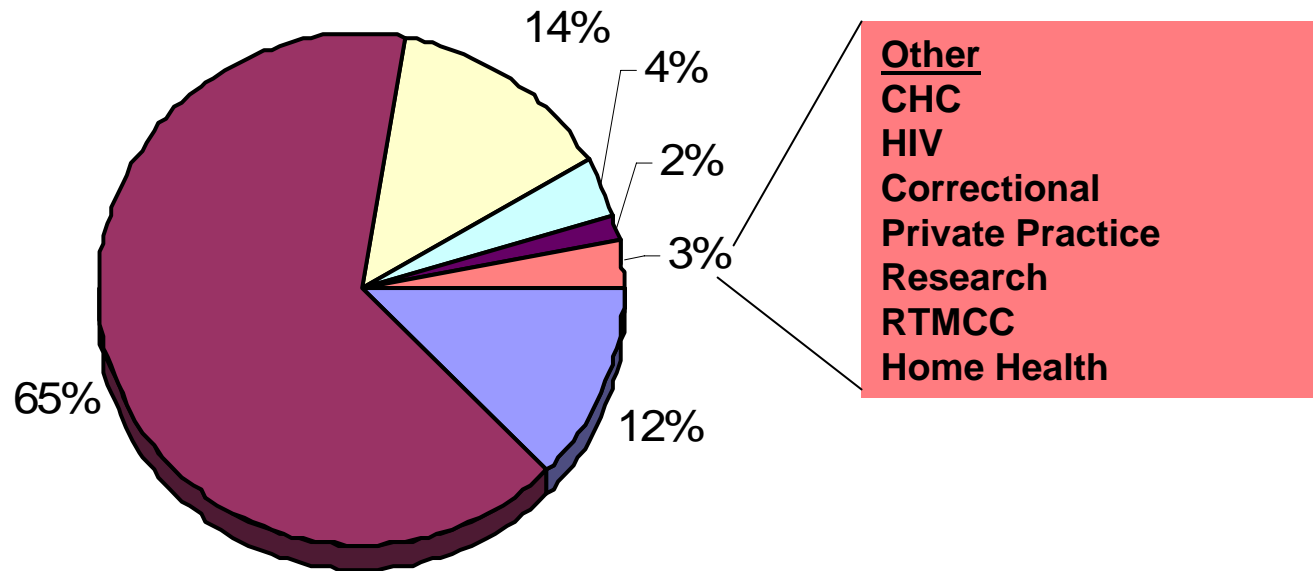
Portion of Time Spent in TB Activities



	0-25%	26-50%	51-75%	76-100%
Percent	39%	20%	8%	34%
Total	281	141	56	242

Work Setting

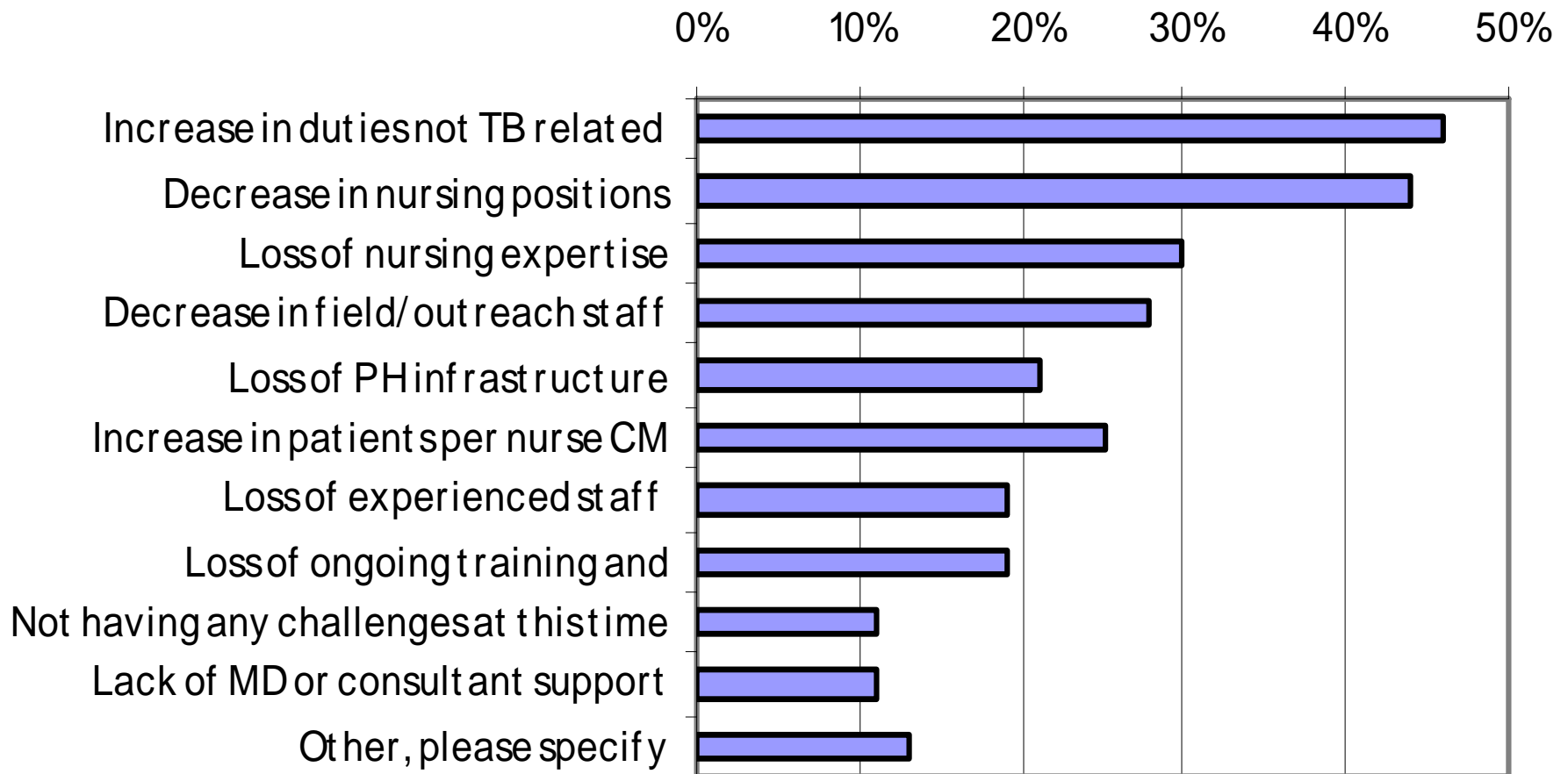
65% - County Health Departments



Job Responsibilities - Most Frequent

TB case manager	49%
TB clinic nurse	34%
PHN generalist	28%
PHN communicable disease	22%
Supervisor of ancillary staff	19%
Management, policy development	14%
TB epidemiology and surveillance	12%
TB nurse consultant	11%

Workforce Challenges



Workforce Challenges

Increase in duties not TB related	46%
Decrease in nursing positions	44%
Loss of nursing expertise	30%
Decrease in field/outreach staff	28%
Loss of PH infrastructure	21%
Increase in patients per nurse CM	25%
Loss of experienced staff	19%
Loss of ongoing training and supervision	19%
Lack of MD or medical consultant support	11%

Case management Challenges

Diagnosis

Difficulty in getting TB suspects promptly evaluated and treated	14%
Diminished access to quality AFB smear and culture laboratory results	6%

Case management Challenges

Treatment Completion

Difficulty in providing DOT	21%
Difficulty in managing patients due to co-morbidity, i.e., HIV/AIDS, diabetes, etc	20%
Difficulty in monitoring patient adherence and response to treatment	18%
Successful treatment outcomes decreasing, i.e., longer treatment, lapses in treatment	17%
Difficulty in getting TB suspects promptly evaluated and treated	14%

Case management Challenges

Treatment Completion

Legal Issues	12%
Problems making international referrals	8%
Inadequate or inappropriate treatment recommendations	7%
Delay in patients ability to obtain TB drugs	6%
Diminished ability to develop effective case management plans	6%
Problems making interjurisdictional referrals within US	5%

Case Management Challenges

Contact Investigations

Difficulty conducting CI, and ensuring contacts are evaluated and treated	32%
Increase complex social networks contact investigations	30%
Diminished ability to conduct home evaluations	14%
Increase in preventable cases among contacts	7%
Simmering outbreaks	6%

Case management Challenges Prevention

Diminished ability to conduct targeted testing & treat LTBI in high risk populations	20%
Surveillance and case finding are compromised	9%
Delay in effective infection control measures	7%

Case Management Challenges

Access to Care

Patients who lack health insurance or access to TB medical care	24%
Increase in homeless	16%

Changes in CM Challenges in Past 5 years

Increase in social, language and cultural barriers	58%
More co-morbidity, i.e., HIV/AIDS, substance abuse, diabetes, etc	36%
Increase in number of TB cases	32%
Increase/change in ethnicity or country of birth of TB cases	32%
Increase in drug-resistant TB	30%

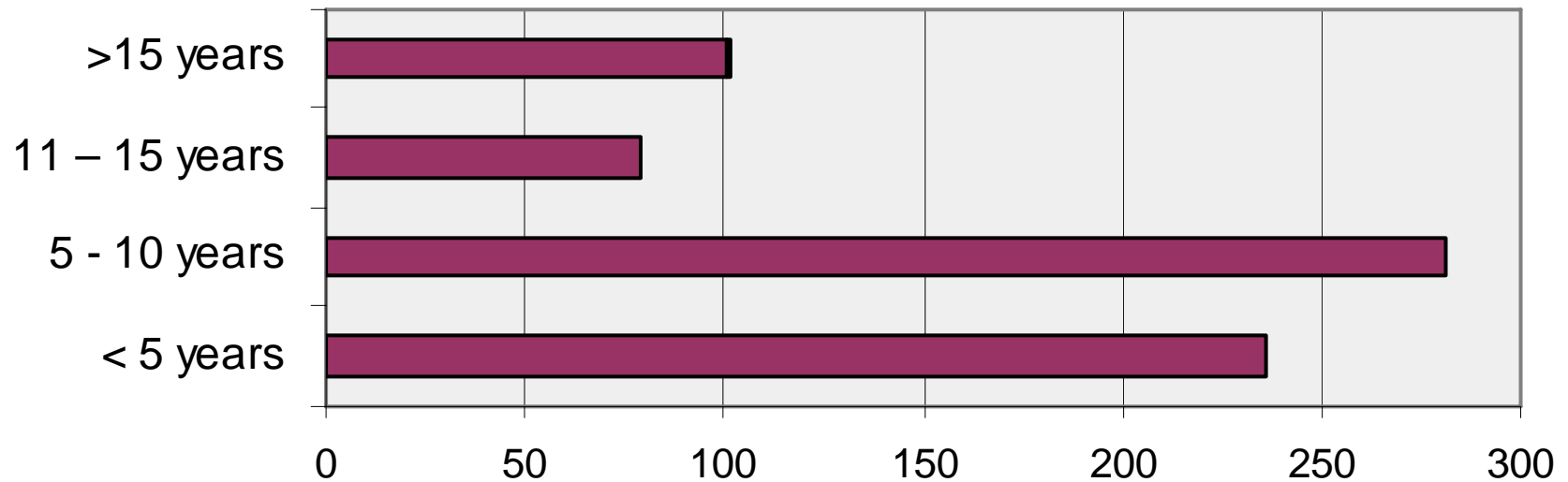
Changes in CM Challenges in Past 5 years

Increase in the severity of the disease	29%
Increase length of infectious period	24%
Increase in non-adherence	22%
Increase in delayed diagnosis or misdiagnosis	21%
Increase in homelessness	21%

Changes in CM Challenges in Past 5 years

Increased need of inpatient care for treatment complications or failure	14%
Increased need for inpatient care for isolation	13%
Increase in drug toxicity	10%
TB cases residing in geographic areas that previously has few or not TB cases	10%

34% will leave TB Control in < 5 yrs
 74% will leave TB Control in <10 yrs



	< 5 years	5 - 10 years	11 - 15 years	>15 years
Percent	34%	40%	11%	14%
total	236	281	79	101